

# MONTHLY MEMBERSHIP PROGRESS REPORT

LOCATION INDIA

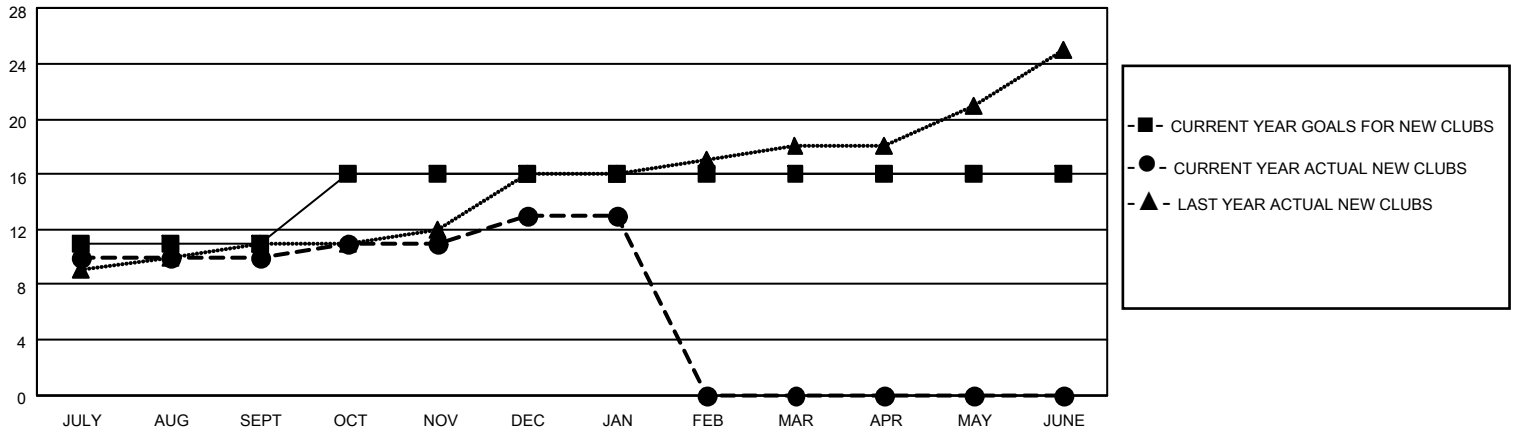
District 321A2

Results as of: 1/31/2022

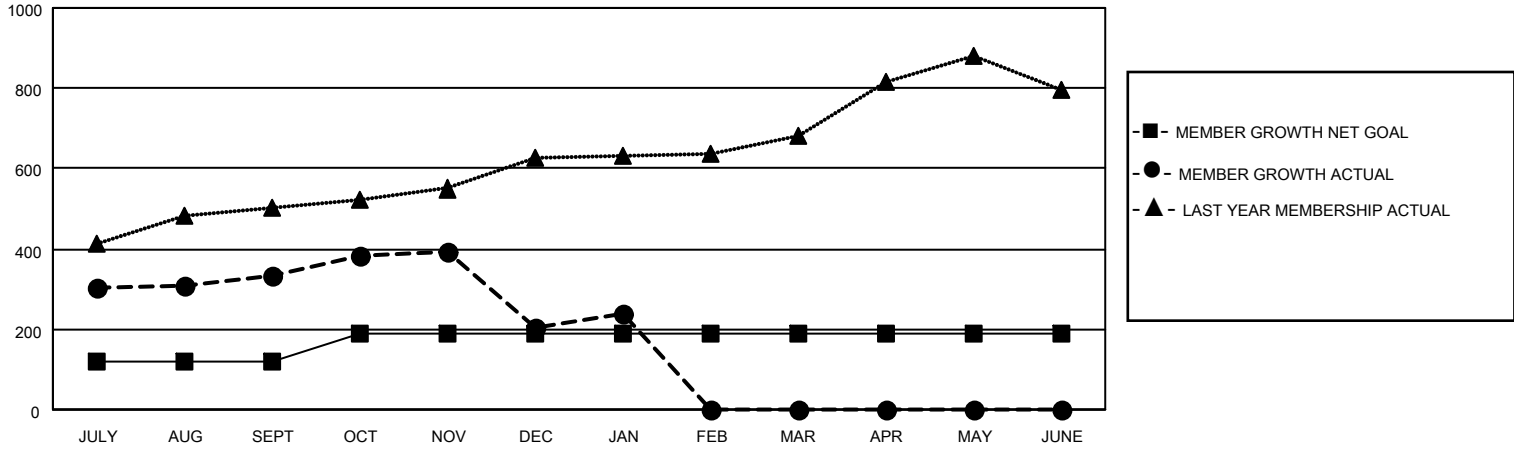
Clubs			
RESULTS FOR 2021-2022			
QUARTER	NEW CLUB GOAL	NEW CLUBS	DROPPED CLUBS
JULY/AUG/SEPT	11	10	4
OCT/NOV/DEC	5	3	7
JAN/FEB/MAR	0	0	1
APR/MAY/JUNE	0	0	0

Members			
RESULTS FOR 2021-2022			
QUARTER	MEMBER GROWTH NET GOAL	MEMBER GROWTH ACTUAL	DROPPED MEMBERS ACTUAL (including transfers)
JULY/AUG/SEPT	120	508	144
OCT/NOV/DEC	70	221	338
JAN/FEB/MAR	0	131	58
APR/MAY/JUNE	0	0	0

**GOALS AND ACTUAL NEW CLUBS CUMULATIVE**



**GOALS AND ACTUAL MEMBERS CUMULATIVE**



**DROPPED CLUBS: 12**

**78 CLUBS OF 163 ADDED 1 OR MORE NEW MEMBERS**

**GENDER DISTRIBUTION**

**DROPPED MEMBERS**

DECEASED	6
CLUB CANCELLED	149
OTHER	385
<b>TOTAL</b>	<b>540</b>

[CLICK HERE FOR CUMULATIVE MEMBERSHIP DATA](#)

MALE	2,649 (64.31%)
FEMALE	1,470 (35.69%)
NON BINARY	0 (0.00%)
PREFER NOT TO ANSWER	0 (0.00%)

TOTAL FAMILY UNIT MEMBERS 2,949

FAMILY MEMBERS PAYING HALF DUES 1,767